

# METRO SLAB™

## CLASSIC

DUSK **NEW**

MIDNIGHT CHARCOAL

SAFARI **NEW**

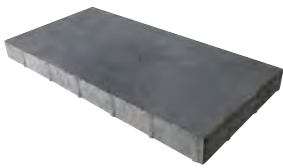
### VISUAL APPEARANCE

A budget-friendly option for patios, walkways and pool decks where a large size slab is preferred, Available in grey, black and tan tones, this 15" x 30" unit creates a clean, modern look.

### FINISH

Smooth, classic finish.

### PRODUCT SPECIFICATIONS



15 x 30 x 2 $\frac{3}{8}$ "  
380 x 760 x 60mm

### EDGE DETAILS



ROUNDED EDGE

\*Colour selection should be chosen from actual samples.

**TECHNICAL INFORMATION**

**ASTM C 936 Standard Specifications for Solid Concrete Interlocking Paving Units**

Conforms to:

- C140 for Absorption 5% avg - 7% max
- Compressive Strength > 7,200 PSI avg.
- C67 for Freeze-thaw Durability
- C418 for Abrasion Durability
- Dimensional Accuracy **+/- 3mm**

*Test results available upon request*

**Meets the U.S. Architectural & Transportation Barrier Compliance Board Slip-Resistance Surfaces Advisory Guidelines**

**LEED INFORMATION**

**Materials & Resources: LEED V4:**

- Building Product Disclosure and Optimization
- Sourcing of Raw Materials - Sourcing of Raw Materials and Extraction • **1 point**
- Sourcing of Raw Materials - Leadership Extraction Practices • **1 point**
- Material Ingredient Reporting - Material Ingredient Reporting • **1 point**
- Material Ingredient Reporting - Material Ingredient Reporting • **1 point**
- Environmental Product Declaration • **1 point**

**TECHNICAL ADVANTAGES**

**CLASSIC**

These products utilize a traditional product mix of large and small aggregates that's consistent from top to bottom with colour mixed throughout

**ClassicCoat**

Factory sealed to protect surface texture and colour

**PEDESTRIAN FRIENDLY**

Not recommended for vehicular loads

**PRODUCT DATA**

Stones & Bundling	Unit Thickness	SqFt Per				Per Bundle		Soldier LnFt Per			Sailor LnFt per			Units Per			Lbs Per		
		Bundle	Layer	Section	Stone	Layers	Sections	Unit	Layer	Bundle	Unit	Layer	Bundle	SqFt	Section	Bundle	Layer	Section	Bundle
<b>Ayr Manufacturing</b>																			
15" x 30"	2 3/8" (60mm)	54.50	9.08	-	3.03	6	-	1.25	-	22.44	2.50	-	44.08	0.33	-	18	249	-	1,496

Notes: Sold in full bundles only on a refundable skid. Metro Slab 60mm is not suitable for vehicular applications. All measurements are nominal. **Important: A urethane rubber paver mat must be used to prevent scuffing.** For more information, samples or custom options, please contact your Unilock Territory Manager or call 1-800-UNILOCK.

**APPLICATIONS**



Pedestrian



Borders and Accents



\*Wall pairing suggestion- U-CARA® Wall or Lineo™ Dimensional Stone

**RECOMMENDED SANDS**

**RECOMMENDED SEALER**



+



**Romex: Rompox® Fugensand**  
*Pedestrian, Vehicular and Heavy Duty Vehicular Applications*

- | Manufactured from natural, raw materials
- | Quick application
- | Self-repairing properties
- | Suitable for all load classes
- | No cement haze/residue due to natural polymer binder
- | Three colours: Natural, Stone Grey and Basalt

**Coverage:**

Colour	5-6mm Joints
Neutral, Stone Grey, Basalt <i>1 L / 5 gal</i>	50-150 sqft / 55 lb bag

**Romex: Rompox® D7000 Joint Strengthener & Surface Sealer**  
*Pedestrian, Vehicular and Heavy Duty Vehicular Applications*

- | All-in-one strengthener & sealer
- | Eco-Friendly
- | Protects against dirt, oil, corrosion from climate exposure, de-icing salts
- | Protects against weed growth and wash outs

**Coverage:**

Colour	3-4mm Joints
Neutral, Stone Grey, Basalt <i>55 lb bag / 1 kg can</i>	50-150 sqft / 55 lb mix

**Alliance Gator G2 Super Sand**

- | Rain safe after 1 hour (no concrete overlays)
- | Sets above 32° F/ 0° C - may vary depending on weather, drainage, bedding materials and installation
- | Can be used for joints up to a max of 2"
- | Dust free and haze free
- | Requires only one watering
- | Two colours: Beige, Slate Grey

**Coverage:**

Colour	Narrow Joints	Wide Joints
Beige, Slate Grey <i>50 lb bag</i>	65-85 sqft	22-42 sqft

**Alliance Gator Natural Look Sealer**

- | Water-based
- | Zero gloss finish
- | Multi purpose
- | Rain safe after 24 hours

**Coverage:**

Size	Area
3.78 L / 1 U.S. gal.	175 sqft
18.9 L / 5.28 U.S. gal.	875 sqft

*\*Please refer to Sands & Sealers on pages 190-202 for more detailed information.*

*Unsure of bonded vs. unbonded product recommendations? Please contact your Unilock Territory Manager for more information.*