

# BRUSSELS DIMENSIONAL STONE®

## CLASSIC



COFFEE CREEK



LIMESTONE



MAHOGAN Y



MIDNIGHT CHARCOAL



SANDSTONE

### VISUAL APPEARANCE

The antiqued appearance of Brussels Dimensional Stone is great for gardens and seat walls.

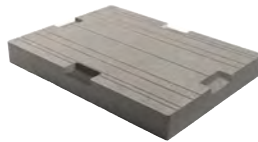
### FINISH

Weathered, antiqued, tumbled.

### PRODUCT SPECIFICATIONS

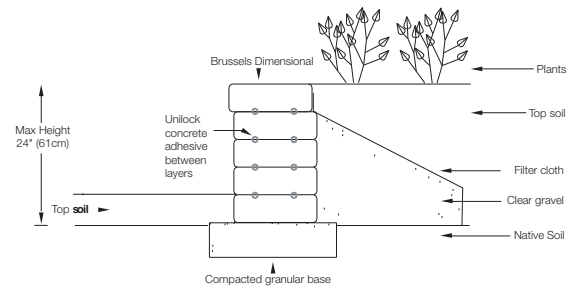


**STANDARD**  
8 x 12 x 4"  
200 x 300 x 100mm



**U-GRIP™ BASE PAD**  
14 x 19 x 2"  
355 x 482 x 55mm

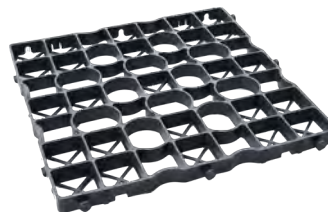
### GRAVITY WALL SECTION



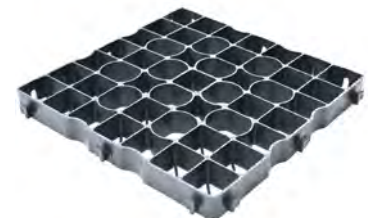
Cross sections are examples and must not be used for construction.



- Creates a revolutionary Reinforced Soil Structure (RSS) with high tensile and compressive strength to maximize the performance of pavement structures.
- Extremely permeable, long lasting, durable and environmentally friendly. Lightweight and easy to handle.
- Simple and quick installation.
- Allows for easy repairs / adjustments after installation.



**DRIVECEL30 LIGHT DUTY**  
20 x 20 x 1.2"  
500 x 500 x 30mm



**DRIVECEL50 HEAVY DUTY**  
20 x 20 x 2"  
500 x 500 x 50mm

See page 186-187 for more details.

\*Colour selection should be chosen from actual samples.

## SUNSET FIREPIT KITS

AVAILABLE COLOURS: Coffee Creek, Mahogany Ash and Sandstone

See page 174 for more details

Round



Square



### TECHNICAL INFORMATION

#### ASTM C 936 Standard Specifications for Solid Concrete Interlocking

Conforms to:

- C140 for Absorption 5% avg - 7% max
- Compressive Strength > 3,000 PSI
- C1262 for Freeze Thaw Durability < 1% mass loss
- C1372 Overall dimensional variations permissible for width, height and length +/- 3mm

#### Unilock standards exceed 6,000 PSI for Brussels Dimensional Stone® products with:

- 4% absorption avg.
- 5% absorption max.
- Dimensional Accuracy +/- 5/64" (+/-2.00mm)

Test results available upon request

#### Meets the U.S. Architectural & Transportation Barrier Compliance Board Slip-Resistance Surfaces Advisory

### LEED INFORMATION

#### Materials & Resources: LEED V4:

- Building Product Disclosure and Optimization
- Sourcing of Raw Materials - Sourcing of Raw Materials and Extraction • 1 point
- Sourcing of Raw Materials - Leadership Extraction Practices • 1 point
- Material Ingredient Reporting - Material Ingredient Reporting • 1 point
- Material Ingredient Reporting - Material Ingredient Optimization • 1 point
- Environmental Product Declaration • 1 point

### PRODUCT DATA

Stones & Bundling	Face Feet Per		Unit	Linear Feet Per		Units Per		Per Bundle		Lbs Per	
	Bundle	Layer		Bundle	Unit	Bundle	Face Feet	Layers	Sections	Unit	Bundle
<b>Ayr Manufacturing</b>											
Standard	32.00	5.33	0.33	96.00	1.00	96	-	6	4	30	2,881
U-GRIP Base Pad Gormley Manufacturing	-	-	-	85.39	1.58	54	-	9	-	46	2,500

Notes: Product is installed using Unilock Concrete Adhesive to secure corners and all rows. Maximum height is 24" including the unit in the ground (under optimum conditions). All measurements are nominal. \*Based on 12" deep wall coverage = 21.4 sqft per bundle. Based on an 8" deep wall coverage = 32 sqft per bundle. For more information, samples or custom options, please contact your Unilock Territory Manager or call 1-800-UNILOCK.

### APPLICATIONS



Garden Walls & Seat Walls



Fire Features



Water Features




Grill Islands



Pillars

Coping Options – We recommend using LedgeStone™, Natural Stone, Universal Coping, Brussels Fullnose™ or Umbriano® Coping.

**RECOMMENDED ADHESIVE**



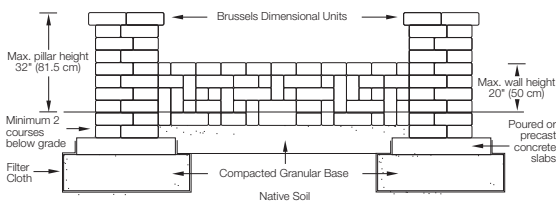
**Alliance Gator Block Bond XP**

- | VOC Compliant
- | Low odour- safe indoors or out
- | Fast curing- provides permanent overnight bond
- | Suitable for use in hot and cold environments
- | Non-shrinking- does not crack
- | Strong and versatile

**Coverage: For 1/4" Bead (approx)**

10 oz		28 oz	
m	ft.	m	ft.
-9	-31	-26	-86

### FRONT ELEVATION



All joints must be adhered with Unilock approved Concrete Adhesive. Base preparation may vary according to soil and climate conditions. Cross sections are examples, and must not be used for construction.