

Tandem® Next Wall Structural 180 mm



Tandem® Next Wall – 180 mm Structural

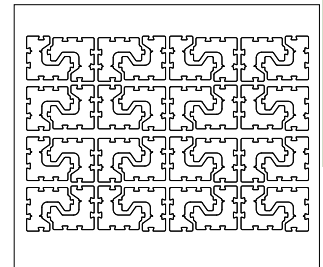


	DIMENSIONS (MM)	DIMENSIONS (IN)
	180 x 200 x 199	7 1/16 x 7 7/8 x 7 7/8
Weight/unit	9.34 kg	20.58 lb
Area/layer	1.13 m ²	12.16 ft ²
Area/cube	4.52 m²	4 Rows 48.64 ft²
Length/row	6.37 lin. m	20.89 lin. ft
Length/cube	25.47 lin. m	83.57 lin. ft
Units/row	32	32
Qty/cube	128 units	128 units
Weight/cube	1317 kg	2903 lb

CODE	COLOUR
16252752	Grey

4 bags of 37 connectors = 1 bag per row
Sold in full cubes only
Production location Trois-Rivières

TYPICAL ROW



Walls

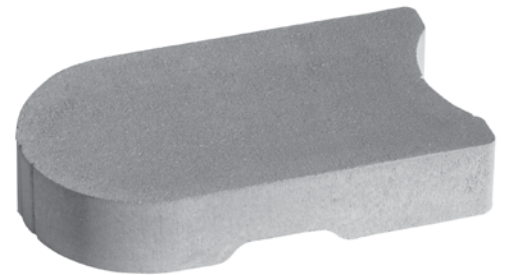
Universal Connector



CODE	COLOUR
70972062	Black

Box of 148 units
1 box of 4 bags of 37 units
72 boxes/cube

Tandem® Next Wall – Starter Unit



Tandem® Next Wall - Starter Unit

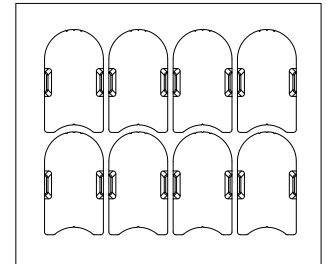


	DIMENSIONS (MM)	DIMENSIONS (IN)
	90 x 268 x 469	3 9/16 x 10 1/2 x 18 1/2
Weight/unit	23 kg	51 lb
Units/length	2.30 units/lin. m	0.70 unit/ft lin.
Qty/cube	56 units	7 Rows 56 units
Weight/cube	1333 kg	2939 lb

CODE	COLOUR
12053584	Grey

Sold by piece
Can be double stacked
Production location Metcalfe

TYPICAL ROW



TECHNICAL INFORMATION

Product	Standard	Flexural Strength	Compressive Strength	De-icing salts freeze-thaw durability	Density	Absorption	Dimension Tolerance*
Tandem Wall	ASTM C 1372	N/A	30 MPa	N/A	2250 kg/m ³	5%	Length: ±2.0 mm Width: ±2.0 mm Height: ±1.0 mm

The Tandem Next Wall system 180 mm Structural Unit may be used with the 180 mm Melville and Lafitt Veneer units for retaining wall applications. Additional details: See our landscaping installation guide on our website.

Tandem® Wall – Structural Unit



Tandem® Wall 90 mm Structural Unit

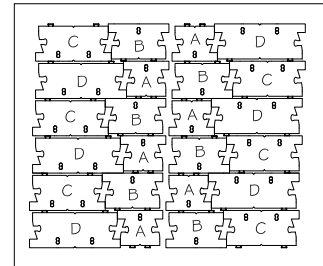
	DIMENSIONS (MM)	DIMENSIONS (IN)
A	90 x 155 x 201	3 9/16 x 6 1/8 x 7 7/8
B	90 x 155 x 268	3 9/16 x 6 1/8 x 10 1/2
C	90 x 155 x 335	3 9/16 x 6 1/8 x 13 3/16
D	90 x 155 x 402	3 9/16 x 6 1/8 x 15 13/16
Weight/unit (avg.)	8 kg	18 lb
Area/layer	0.65 m ²	7.02 ft ²
Area/cube	3.91 m²	6 Rows 42.12 ft²
Qty/cube	A = 36	B = 36 C = 36 D = 36
Length/row (1 to 5)	7.24 lin. m	23.75 lin. ft
Length/cube	43.44 lin. m	142.50 lin. ft
Weight/cube	1230 kg	2711 lb

CODE	COLOUR
16259063	Grey

For each structural unit,
1 alignment pin is included
A set of 4 units = 1.17 ft²

Sold in full cubes only
Can be double stacked
Production location Trois-Rivières

TYPICAL ROW



TECHNICAL INFORMATION

Product	Standard	Flexural Strength	Compressive Strength	De-icing salts freeze-thaw durability	Density	Absorption	Dimension Tolerance*
Tandem Wall Structural	ASTM C 1372	N/A	30 MPa	N/A	2250 kg/m ³	5%	Length: ±2.0 mm Width: ±2.0 mm Height: ±1.0 mm

The Tandem Structural units must be used with the Melville and Lafitt Veneer units for retaining wall applications.
Additional details: See our landscaping installation guide on our website.