

UMBRIANO[®] 70mm

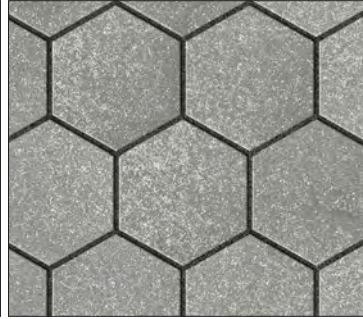
Exclusive to **JNIOLOCK**



ENDURACOLOR™

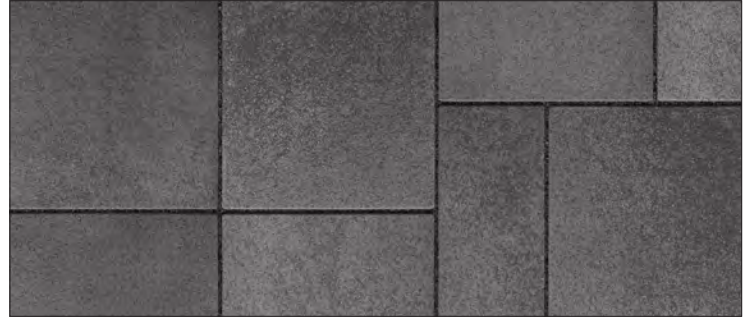


FRENCH GREY

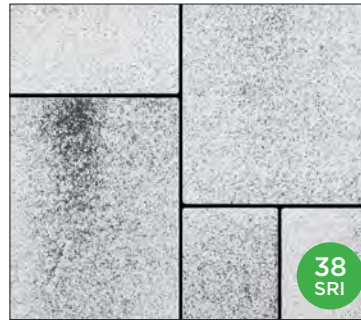


MIDNIGHT SKY

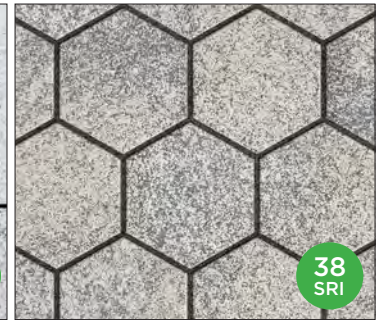
ONLY AVAILABLE IN 8 x 16 & 8 x 24



SUMMER WHEAT



WINTER MARVEL



VISUAL APPEARANCE

Granite-like surface appearance.

FINISH

Subtly mottled colour and finish. Factory sealed to provide integral surface protection from stains

PRODUCT SPECIFICATIONS



24 x 24 x 2³/₄"
600 x 600 x 70mm
Special Order only



12 x 24 x 2³/₄"
300 x 600 x 70mm



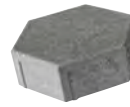
8 x 24 x 2³/₄"
200 x 600 x 70mm



8 x 16 x 2³/₄"
200 x 400 x 70mm



16 x 16 x 2³/₄"
400 x 400 x 70mm



HEX
8 x 8 x 2³/₄"
200 x 200 x 70mm

EDGE DETAILS



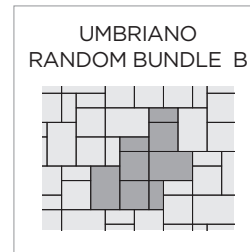
ZERO BEVEL EDGE

BEVELLED EDGE
**Hex Shape only*

BUNDLE CONFIGURATION



LAYING PATTERNS



*Colour selection should be chosen from actual samples.

TECHNICAL INFORMATION

ASTM C936 Standard Specifications for Solid Concrete Interlocking Paving Units

Conforms to:

- C140 for Absorption 5% avg - 7% max
- Compressive Strength > 7,200 PSI avg.
- C67 for Freeze-thaw Durability
- C418 for Abrasion Durability
- Dimensional Accuracy +/- 3 mm

Test results available upon request

Meets the U.S. Architectural & Transportation Barrier Compliance Board Slip-Resistance Surfaces Advisory Guidelines

SOLAR REFLECTIVE INDEX (SRI) TESTING DETAILS

Product	Solar Reflectance	SRI
Cream (custom)	0.45	52
Summer Wheat	0.42	48
Winter Marvel	0.35	38

TECHNICAL ADVANTAGES

ENDURACOLOR™

Refined surface and long-lasting colour



Factory sealed for integral stain resistance

COLORFUSION™

Subtly mottled colour finish

DRIVE FRIENDLY

24" Slabs **not** recommended for vehicular loads

All other sizes can handle vehicular loads

Ask about our base stabilization system

LEED INFORMATION

Rainwater Management: LEED V4:

- Up to three points can be achieved for retaining rainwater onsite based on the percentile kept
- 85% (zero lot line projects only) - 3 points, 95% - 2 points and 98% - 3 points. (All except Healthcare - subtract one point) See LEED v4 for more specific project/site details.

Materials and Resources: LEED V4:

- Building Product Disclosure and Optimization
- Sourcing of Raw Materials - Sourcing of Raw Materials and Extraction • **1 point**
- Sourcing of Raw Materials - Leadership Extraction Practices • **1 point**
- Material Ingredient Reporting - Material Ingredient Reporting • **1 point**
- Material Ingredient Reporting - Material Ingredient Optimization • **1 point**
- Environmental Product Declaration • **1 point**

PRODUCT DATA

Stones & Bundling	Unit		SqFt Per				Per Bundle		Soldier LnFt Per			Sailor LnFt per			Units Per			Lbs Per		
	Thickness	Bundle	Layer	Section	Stone	Layers	Sections	Unit	Section	Bundle	Unit	Section	Bundle	SqFt	Section	Bundle	Layer	Section	Bundle	
Georgetown Manufacturing																				
24 x 24	2¾" (70mm)	62.00	7.75	-	3.88	8	-	1.97	-	31.50	1.97	-	31.50	0.26	-	16	258	-	2,062	
12 x 24	2¾" (70mm)	93.00	11.63	-	1.94	8	-	0.98	-	47.20	1.97	-	94.50	0.52	-	48	393	-	3,142	
16 x 16"	2¾" (70mm)	82.67	10.33	-	1.72	8	-	1.31	-	63.00	1.31	-	63.00	0.58	-	48	350	-	2,797	
8" x 16"	2¾" (70mm)	82.67	10.33	-	0.86	8	-	0.66	-	63.00	1.31	-	126.00	1.16	-	96	343	-	2,746	
8" x 24"	2¾" (70mm)	82.67	10.33	-	1.29	8	-	0.66	-	42.00	1.97	-	83.99	0.77	-	64	331	-	2,647	
HEX 8 x 8	2¾" (70mm)	73.92	9.24	-	0.39	8	-	-	-	-	-	-	-	2.60	-	192	306	-	2,450	

Notes: 24" products are not intended for vehicular applications. All measurements are nominal. **Sold in full bundles only** on a refundable skid. **Important: A urethane rubber paver mat must be used to prevent scuffing.** For more information, samples or custom options, please contact your Unilock Territory Manager or call 1-800-UNILOCK.

APPLICATIONS



Pedestrian



Residential Vehicular (24" Slabs not recommended for vehicular loads)



Commercial Vehicular (Hex only) (24" Slabs not recommended for vehicular loads)



Roof Deck



Borders and Accents



Wall pairing suggestion- U-CARA - matching colour and finish

RECOMMENDED SANDS

RECOMMENDED SEALER



Romex: Rompox® Fugensand
Pedestrian, Vehicular and Heavy Duty Vehicular Applications

- Manufactured from natural, raw materials
- Quick application
- Self-repairing properties
- Suitable for all load classes
- No cement haze/residue due to natural polymer binder
- Three colours: Natural, Stone Grey and Basalt

Coverage:

Colour	3mm Joints
Neutral, Stone Grey, Basalt 1 L / 5 gal	110 sqft / 55 lb bag 750 sqft / 5 gal drum

Romex: Rompox® D7000 Joint Strengtheners & Surface Sealer
Pedestrian, Vehicular and Heavy Duty Vehicular Applications

- All-in-one strengthener & sealer
- Eco-Friendly
- Protects against dirt, oil, corrosion from climate exposure, de-icing salts
- Protects against weed growth and wash outs

Coverage:

Colour	3mm Joints
Neutral, Stone Grey, Basalt 55 lb bag / 1 kg can	110 sqft / 55 lb bag 750 sqft / 5 gal drum

Alliance Gator G2 MAXX Sand

- Rain safe after 15 minutes (24hr no rain if concrete overlay)
- Sets above 32° F/ 0° C - may vary depending on weather, drainage, bedding materials and installation
- Dust free and haze free
- Requires only one watering
- Four colours: Beige, Grey, Black and Ivory

Coverage:

Colour	Narrow Joints	Wide Joints
Beige, Grey, Ivory 50 lb bag	65-85 sqft	22-42 sqft
Black 50 lb bag	58-76 sqft	20-38 sqft

Alliance Gator Hybrid Low Gloss + Colour Enhancer

- Water-based
- Low gloss finish
- Vibrant Colour Enhancer
- Rain safe after 24 hours

Coverage:

Size	Area
3.78 L / 1 U.S. gal.	200 sqft
18.9 L / 5.28 U.S. gal.	1000 sqft

*Please refer to Sands & Sealers on pages 190-202 for more detailed information.

Unsure of bonded vs. unbonded product recommendations? Please contact your Unilock Territory Manager for more information.

