

UMBRIANO[®] 100mm

Exclusive to **JNILOCK**



ENDURACOLOR™



FRENCH GREY



SUMMER WHEAT

48
SRI



WINTER MARVEL

38
SRI

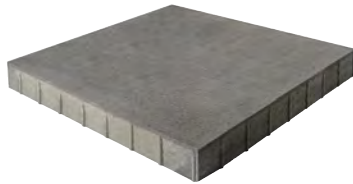
VISUAL APPEARANCE

Granite-like surface appearance.

FINISH

Subtly mottled colour and finish. Factory sealed to provide integral surface protection from stains.

PRODUCT SPECIFICATIONS



36 x 36 x 4"
900 x 900 x 100mm
See Slabs section page
106 for more details



18 x 36 x 4"
450 x 900 x 100mm
See Slabs section page
106 for more details

EDGE DETAILS

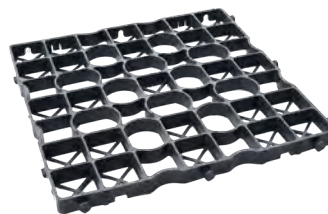


ROUNDED EDGE
100mm

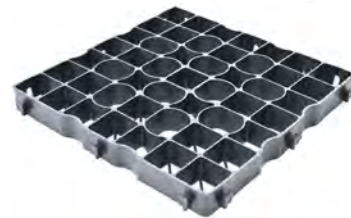
JNILOCK **DRIVECEL**

- Creates a revolutionary Reinforced Soil Structure (RSS) with high tensile and compressive strength to maximize the performance of pavement structures.
- Extremely permeable, long lasting, durable and environmentally friendly. Lightweight and easy to handle.
- Simple and quick installation.
- Allows for easy repairs / adjustments after installation.

See page 186-187 for more details.



DRIVECEL30 LIGHT DUTY
20 x 20 x 1.2"
500 x 500 x 30mm



DRIVECEL50 HEAVY DUTY
20 x 20 x 2"
500 x 500 x 50mm

*Colour selection should be chosen from actual samples.

TECHNICAL INFORMATION

ASTM C936 Standard Specifications for Solid Concrete Interlocking Paving Units

Conforms to:

- C140 for Absorption 5% avg - 7% max
- Compressive Strength > 7,200 PSI avg.
- C67 for Freeze-thaw Durability
- C418 for Abrasion Durability
- Dimensional Accuracy **+/- 3 mm**

Test results available upon request

Meets the U.S. Architectural & Transportation Barrier Compliance Board Slip-Resistance Surfaces Advisory Guidelines

SOLAR REFLECTIVE INDEX (SRI) TESTING DETAILS

Product	Solar Reflectance	SRI
Cream (custom)	0.45	52
Summer Wheat	0.42	48
Winter Marvel	0.35	38

TECHNICAL ADVANTAGES

ENDURACOLOR™

Refined surface and long-lasting colour



Factory sealed for integral stain resistance

COLORFUSION™

Subtly mottled colour finish

PEDESTRIAN FRIENDLY

Not recommended for vehicular loads

LEED INFORMATION

Rainwater Management: LEED V4:

- Up to three points can be achieved for retaining rainwater onsite based on the percentile kept
- 85% (zero lot line projects only) - 3 points, 95% - 2 points and 98% - 3 points. (All except Healthcare - subtract one point) See LEED v4 for more specific project/site details.

Materials and Resources: LEED V4:

- Building Product Disclosure and Optimization
- Sourcing of Raw Materials - Sourcing of Raw Materials and Extraction • **1 point**
- Sourcing of Raw Materials - Leadership Extraction Practices • **1 point**
- Material Ingredient Reporting - Material Ingredient Reporting • **1 point**
- Material Ingredient Reporting - Material Ingredient Optimization • **1 point**
- Environmental Product Declaration • **1 point**

PRODUCT DATA

Stones & Bundling	Unit Thickness	SqFt Per				Per Bundle		Soldier LnFt Per			Sailor LnFt per			Units Per			Lbs Per		
		Bundle	Layer	Section	Stone	Layers	Sections	Unit	Section	Bundle	Unit	Section	Bundle	SqFt	Layer	Bundle	Layer	Section	Bundle
Georgetown Manufacturing																			
36 x 36 x 4"	4" (100mm)	43.59	8.72	-	-	5	--	-	-	-	-	-	-	-	1	5	-	-	1,994
18 x 36 x 4"	4" (100mm)	43.59	8.72	-	-	5	-	-	-	-	-	-	-	2	10	-	-	1,994	

Notes: **24" and 60mm Random products are not intended for vehicular applications.** All measurements are nominal. **Sold in full bundles only** on a refundable skid.

Important: A urethane rubber paver mat must be used to prevent scuffing. For more information, samples or custom options, please contact your Unilock Territory Manager or call 1-800-UNILOCK.

APPLICATIONS



Pedestrian



Residential Vehicular (with DriveCel)



Roof Deck

*Wall pairing suggestion- U-CARA™ - matching colour and finish

RECOMMENDED SANDS

RECOMMENDED SEALER



Romex: Rompox® Fugensand
Pedestrian, Vehicular and Heavy Duty Vehicular Applications

- | Manufactured from natural, raw materials
- | Quick application
- | Self-repairing properties
- | Suitable for all load classes
- | No cement haze/residue due to natural polymer binder
- | Three colours: Natural, Stone Grey and Basalt

Coverage:

Colour	3mm Joints
Neutral, Stone Grey, Basalt 1 L / 5 gal	110 sqft / 55 lb bag 750 sqft / 5 gal drum

Romex: Rompox® D7000 Joint Strengthener & Surface Sealer
Pedestrian, Vehicular and Heavy Duty Vehicular Applications

- | All-in-one strengthener & sealer
- | Eco-Friendly
- | Protects against dirt, oil, corrosion from climate exposure, de-icing salts
- | Protects against weed growth and wash outs

Coverage:

Colour	3mm Joints
Neutral, Stone Grey, Basalt 55 lb bag / 1 kg can	110 sqft / 55 lb bag 750 sqft / 5 gal drum

Alliance Gator G2 MAXX Sand

- | Rain safe after 15 minutes (24hr no rain if concrete overlay)
- | Sets above 32° F/ 0° C - may vary depending on weather, drainage, bedding materials and installation
- | Dust free and haze free
- | Requires only one watering
- | Four colours: Beige, Grey, Black and Ivory

Coverage:

Colour	Narrow Joints	Wide Joints
Beige, Grey, Ivory 50 lb bag	65-85 sqft	22-42 sqft
Black 50 lb bag	58-76 sqft	20-38 sqft

Alliance Gator Hybrid Low Gloss + Colour Enhancer

- | Water-based
- | Low gloss finish
- | Vibrant Colour Enhancer
- | Rain safe after 24 hours

Coverage:

Size	Area
3.78 L / 1 U.S. gal.	200 sqft
18.9 L / 5.28 U.S. gal.	1,000 sqft

*Please refer to Sands & Sealers on pages 190-202 for more detailed information.

Unsure of bonded vs. unbonded product recommendations? Please contact your Unilock Territory Manager for more information.