

ENDURA™ COPING NEW FOR 2023

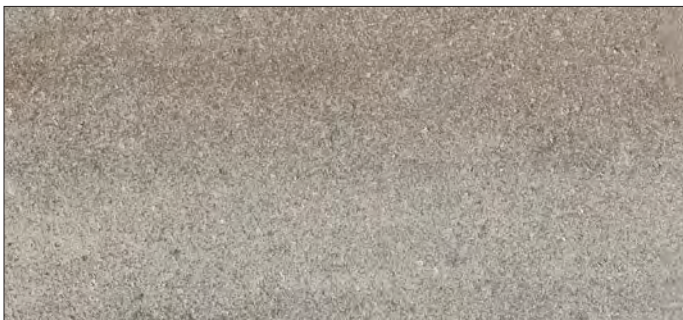
ENDURACOLOR™



ALMOND GROVE FUSION



GRANITE MIST



FOSSIL



OPAL BLEND

VISUAL APPEARANCE

Flat surface texture for a sleek, modern look with a contemporary colour palette.

FINISH

Smooth with EnduraColor™ finish.

PRODUCT SPECIFICATIONS



BULLNOSE
14 x 24 x 2 3/8"
360 x 600 x 60mm



CHAMFERED
14 x 24 x 2 3/8"
360 x 600 x 60mm

RECOMMENDED ADHESIVE & MORTAR



Alliance Gator Block Bond XP

- | VOC Compliant
- | Low odour- safe indoors or out
- | Fast curing- provides permanent overnight bond
- | Suitable for use in hot and cold environments
- | Non-shrinking- does not crack
- | Strong and versatile

Coverage: For 1/4" Bead (approx)

10 oz		28 oz	
m	ft.	m	ft.
-9	-31	-26	-86



Ardex X32 Microtec

- | Fast setting - 3 hours
- | Water repellent - for fast track swimming pool and wet area applications
- | Ideal for heavy and large format tiles
- | Easy to mix and apply - just add water
- | Ideal for pool surroundings, patios, walkways, roof decks and more
- | For joints up to 1 1/4" (32mm)
- | Ideal for Natural Stone, Porcelain, Granite
- | Two colours: Grey, White

Coverage: 1/4" x 1/4" Sq. Notch trowel; 80 sq. ft. (7.4 sq. m)

PRODUCT DATA

Stones & Bundling	Unit	LnFt Per			Per Bundle		Soldier LnFt Per			Sailor LnFt per			Units Per			Lbs Per		
	Thickness	Unit	Layer	Bundle	Layers	Sections	Unit	Section	Bundle	Unit	Layer	Bundle	SqFt	Section	Bundle	Layer	Section	Bundle
Pickering Manufacturing																		
Endura Coping	2 3/8" (60mm)	1.31	7.87	47.24	6	-	-	-	-	1.31	7.87	47.24	-	-	24	251.62	-	1,509.74

Notes: Non-antiqued available in full bundles only. All measurements are nominal. For more information, samples or custom options, please contact your Unilock Territory Manager or call 1-800-UNILOCK.

