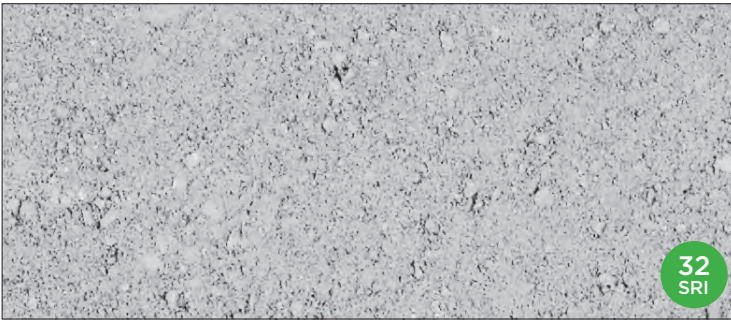


TURFSTONE™

 PERMEABLE

**Special Order only*



NATURAL



VISUAL APPEARANCE

Its filigree design makes it an attractive and permanent solution for emergency access areas, embankments, spillways, and environmentally sensitive parking areas.

FINISH

Classic Finish. Turfstone has the option of being filled with grass or aggregates depending on the project's drainage requirements.

PRODUCT SPECIFICATIONS

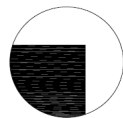


STANDARD

16 x 24 x 3 1/8"

400 x 600 x 80mm

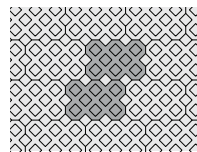
EDGE DETAILS



ZERO-BEVEL EDGE

LAYING PATTERNS

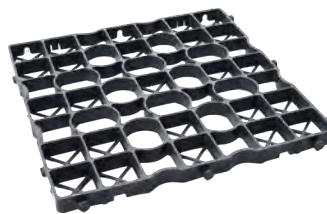
TURFSTONE A



DRIVECEL

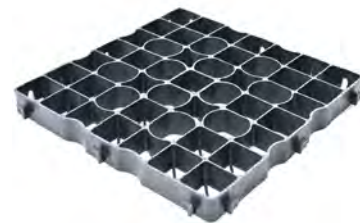
- Creates a revolutionary Reinforced Soil Structure (RSS) with high tensile and compressive strength to maximize the performance of pavement structures.
- Extremely permeable, long lasting, durable and environmentally friendly. Lightweight and easy to handle.
- Simple and quick installation.
- Allows for easy repairs / adjustments after installation.

See page 186-187 for more details.



DRIVECEL30 LIGHT DUTY

20 x 20 x 1.2"
500 x 500 x 30mm



DRIVECEL50 HEAVY DUTY

20 x 20 x 2"
500 x 500 x 50mm

*Colour selection should be chosen from actual samples.

TECHNICAL INFORMATION

ASTM C936 Standard Specifications for Solid Concrete Interlocking Paving Units

Conforms to:

- C140 for Absorption 5% avg - 7% max
- Compressive Strength > 7,200 PSI avg.
- C67 for Freeze-thaw Durability
- C418 for Abrasion Durability
- Dimensional Accuracy **+/- 3 mm**


Test results available upon request

Meets the U.S. Architectural & Transportation Barrier Compliance Board Slip-Resistance Surfaces Advisory Guidelines

Void Space: 40%

Load Capacity: Turfstone is capable of supporting H₂O loading over a properly designed and compacted base.

SOLAR REFLECTIVE INDEX (SRI) TESTING DETAILS

Product	Solar Reflectance	SRI
Natural	0.30	32 

LEED INFORMATION

Rainwater Management: LEED V4:

- Up to 3 points can be achieved for retaining rainwater onsite based on the percentile kept
- 85% (zero lot line projects only) - 3 points, 95% - 2 points and 98% - 3 points. (All except Healthcare - subtract one point) See LEED v4 for more specific project/site details.

Materials and Resources: LEED V4:

- Building Product Disclosure and Optimization
- Sourcing of Raw Materials - Sourcing of Raw Materials and Extraction • **1 point**
- Sourcing of Raw Materials - Leadership Extraction Practices • **1 point**
- Material Ingredient Reporting - Material Ingredient Reporting • **1 point**
- Material Ingredient Reporting - Material Ingredient Optimization • **1 point**
- Environmental Product Declaration • **1 point**

TECHNICAL ADVANTAGES

 **PERMEABLE**

Can be installed to allow water to flow through

PRODUCT DATA

Stones & Bundling	Unit	SqFt Per				Per Bundle		Soldier LnFt Per			Sailor LnFt per			Units Per			Lbs Per		
	Thickness	Bundle	Layer	Section	Stone	Layers	Sections	Unit	Section	Bundle	Unit	Section	Bundle	SqFt	Section	Bundle	Layer	Section	Bundle
Ayr / Gormley Manufacturing																			
Standard	3 1/8" (80mm)	60.00	7.50	-	2.50	8	-	-	-	-	-	-	-	0.40	-	24	187	-	1,499

Notes: **Special Order item.** Lead time required. Sold in full bundles only on a refundable skid. All measurements are nominal. For more information, samples or custom options, please contact your Unilock Territory Manager or call 1-800-UNILOCK.

APPLICATIONS

 Permeable

*Turfstone™ is typically used in erosion control situations. Also known to be used in areas where emergency access routes are required.

RECOMMENDED SANDS



 **Romex: Rompox® Profi-Deko**

- | For Residential & Commercial applications
- | For permeable paver joints
- | Helps prevent gravel displacement and reduces maintenance
- | Strong and visually appealing
- | Graded to meet ASTM No. 9 water rate
- | Perfect for pathways, tree pits and decorative gravel areas
- | Resistant to ants, weeds, frost, de-icing salt and is pressure washer safe

Coverage:

Size	Area
1L bottle + One 2L bottle (to be mixed with chosen aggregate)	20-25 sqft



 **Alliance Gator Aqua Rock**

- | For Residential & Commercial applications
- | For permeable paver joints
- | Helps prevent erosion due to climatic conditions
- | Use as bedding and jointing material
- | Graded to meet ASTM No. 9 water rate
- | Long term high infiltration performance
- | 2,200 lb Super Sack available for large applications

Coverage:

Size	Area
50 lb bag	20-25 sqft
2,200 lb Super Sack	880-1100 sqft

*Please refer to Sands & Sealers on pages 190-202 for more detailed information.

Unsure of bonded vs. unbonded product recommendations? Please contact your Unilock Territory Manager for more information.