

# ENDURA™ COPING

**UNILOCK®**

TECH SHEET

THICKNESS 60MM

REGION ONTARIO



EDGE  
CHAMFERED EDGE DETAIL

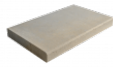


**UNILOCK®** Exclusive Technologies

ENDURACOLOR

**COLORS**

**INDIANA BUFF  
FINISH: SMOOTH  
PREMIER**

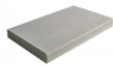


**COPING CHAMFERED**  
900mm x 60mm x 485mm  
35 1/2" x 2 3/8" x 19"



**FULLNOSE COPING**  
600mm x 60mm x 355mm  
23 5/8" x 2 3/8" x 14"

**STERLING  
FINISH: SMOOTH  
PREMIER**

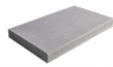


**COPING CHAMFERED**  
900mm x 60mm x 485mm  
35 1/2" x 2 3/8" x 19"



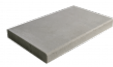
**FULLNOSE COPING**  
600mm x 60mm x 355mm  
23 5/8" x 2 3/8" x 14"

**FOSSIL  
FINISH: SMOOTH  
PREMIER**

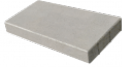


**COPING CHAMFERED**  
600mm x 60mm x 355mm  
23 5/8" x 2 3/8" x 14"

**LINEN GREY  
FINISH: SMOOTH  
PREMIER**

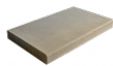


**COPING CHAMFERED**  
900mm x 60mm x 485mm  
35 1/2" x 2 3/8" x 19"



**COPING CHAMFERED**  
600mm x 60mm x 355mm  
23 5/8" x 2 3/8" x 14"

**LINEN BUFF  
FINISH: SMOOTH  
PREMIER**

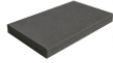
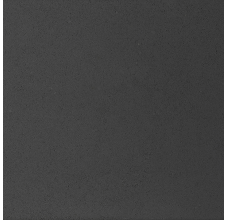


**COPING CHAMFERED**  
900mm x 60mm x 485mm  
35 1/2" x 2 3/8" x 19"

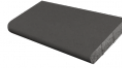


**COPING CHAMFERED**  
600mm x 60mm x 355mm  
23 5/8" x 2 3/8" x 14"

**DARK CHARCOAL  
FINISH: SMOOTH  
PREMIER**

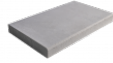
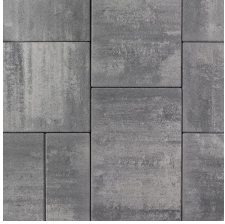


**COPING CHAMFERED**  
900mm x 60mm x 485mm  
35 1/2" x 2 3/8" x 19"



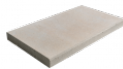
**FULLNOSE COPING**  
600mm x 60mm x 355mm  
23 5/8" x 2 3/8" x 14"

**GRANITE FUSION  
FINISH: SMOOTH  
PREMIER**



**COPING CHAMFERED**  
600mm x 60mm x 355mm  
23 5/8" x 2 3/8" x 14"

**OAT BEIGE  
FINISH: SMOOTH  
PREMIER**



**COPING CHAMFERED**  
600mm x 60mm x 355mm  
23 5/8" x 2 3/8" x 14"

**PACKAGING**

	COPING CHAMFERED	COPING CHAMFERED	FULLNOSE COPING	FULLNOSE COPING	COPING BULLNOSE	COPING FULLNOSE	COPING BULLNOSE
UNIT THICKNESS (MM)	60	60	60	60	60	60	60
LAYERS PER BUNDLE	6	6	6	6	6	6	6
FCFT PER BUNDLE	6.96	6.96	6.96	-	-	-	-
FCFT PER LAYER	1.16	1.16	1.16	-	-	-	-
FCFT PER UNIT	0.58	0.58	0.58	-	-	-	-
UNITS PER BUNDLE	12	24	24	12	24	24	12
UNITS PER LAYER	2	4	4	2	4	4	2
LBS PER BUNDLE	1,547.40	1,509.74	1,509.74	1,547.40	1,509.74	1,509.74	1,547.40
LBS PER LAYER	257.90	251.62	251.62	257.90	251.62	251.62	257.90
LBS PER UNIT	128.95	62.91	62.91	128.95	62.91	62.91	128.95

## INSTALLATION NOTES

---

### IMPORTANT INFORMATION

The base units are designed to provide the installer a flat surface on the retaining wall base gravel to facilitate quick and easy installation of any retaining wall type. These units also help bridge smaller retaining wall units to prevent differential settlement between units. The multiple lines embossed into the surface provide an alignment guide when placing retaining wall units.

#### Handling and Installation –

The top of the unit should be located below grade in the base trench so that a minimum 6” of the first row of block sits below grade as well.

Units can be individually levelled or they can be placed on a screeded bed of stone chip for rapid installation. Although rectangular in shape, they can be installed in a “sailor” pattern or a “soldier” pattern depending on the wall type and/or the desired appearance.

Always sweep the surface clean prior to placing the first row of retaining wall units.

---

Contact Unilock Representative for actual color samples and availability. Unilock reserves the right to change product information without notice.

PDF Generated April 20, 2026, 10:34 am

UNILOCK